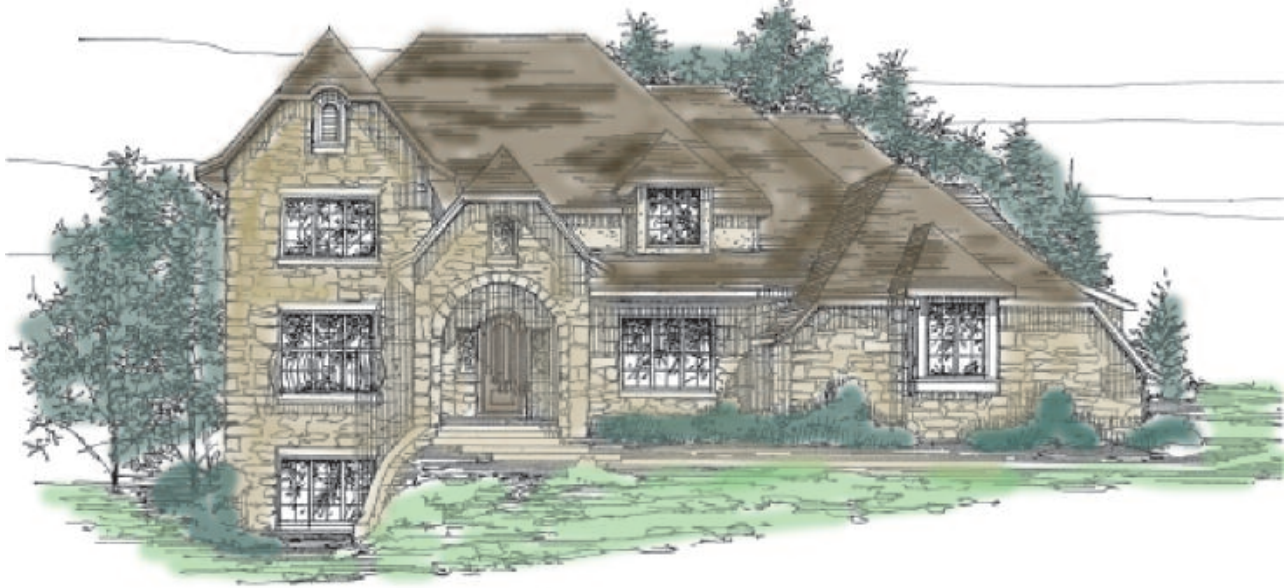
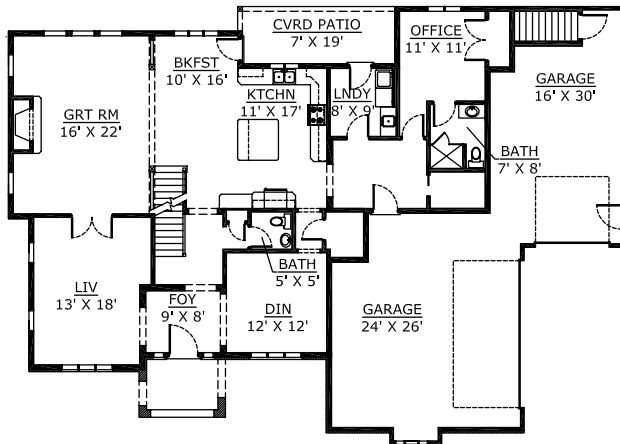


The Dalton

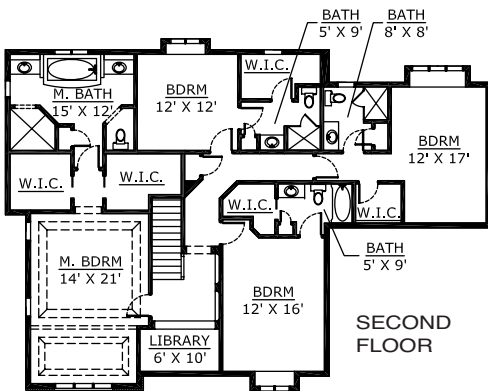
Temmer Construction and Development is proud to present "The Dalton." Looking to the eastern skies of the Clearwater Creek Development, this home offers the popular open-concept floor plan with spacious rooms, unique ceilings, arches, pillars and open staircase. The great charm and exquisite craftsmanship makes this home a must see.



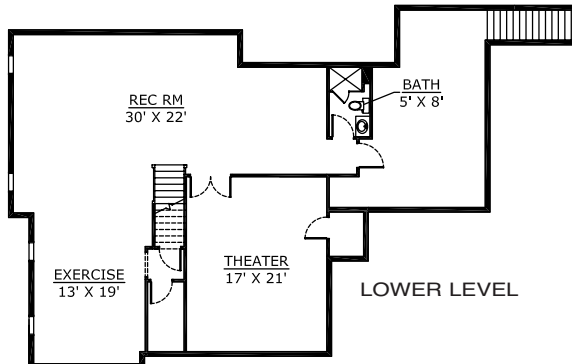
5638 North Rosemary Drive, Appleton



FIRST FLOOR



SECOND FLOOR



LOWER LEVEL

SQUARE FOOTAGE

2018	1st Floor
1950	2nd Floor
1534	Finished Lower Level
<hr/>	
5502	Total



TEMMER
CONSTRUCTION & DEVELOPMENT

816 W. Capitol Drive
Appleton, Wisconsin 54914

(920) 734-3030 Off
(920) 734-3032 Fax

info@temmerhomes.com
www.temmerhomes.com

Brad Temmer
Eric Temmer



The Dalton

This spacious English Cottage style two story home has five bedrooms, five baths and is located in the North Appleton's Clearwater Creek Subdivision. Stunning views of an almost completely private backyard, architectural detailing, and masterful craftsmanship makes this home truly shine.

- *This kitchen features finely crafted glazed custom cabinetry gracefully integrating state of the art appliances and granite countertops. Butler's pantry adjoins the formal dining and kitchen, for all your dining parties.*
- *Dark hardwood floors, natural stone tiles, and real stone fireplace facing offer a timeless, upscale feeling throughout the home.*
- *Luxurious master suite features an adjoining sitting area, spa-like bath with rich marble tile floors, custom design painted cabinetry, and a huge free standing soaking tub.*
- *The exposed lower level is a haven for guests and includes gaming, exercising, sitting and media areas.*
- *The home's open, expansive layout is attention grabbing. Simple, classic arches define the rooms of the first level, while enormous windows bring the outside in.*
- *Other features include: Monitored fire and security systems, central vacuum, four room home sound system with touch pads and ipod interface.*
- *This home is professionally designed and decorated.*



816 W. Capitol Drive • Appleton, Wisconsin 54914 • (920) 734-3030 Off • (920) 734-3032 Fax
info@temmerhomes.com • www.temmerhomes.com

Brad Temmer / Eric Temmer